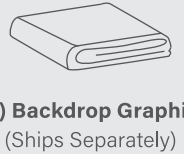
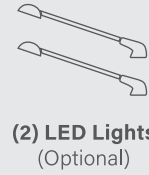
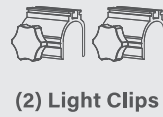
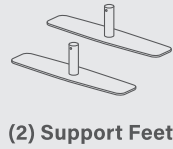
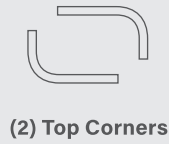
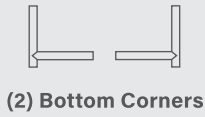


QuickZip™ Straight Display

ASSEMBLY INSTRUCTIONS

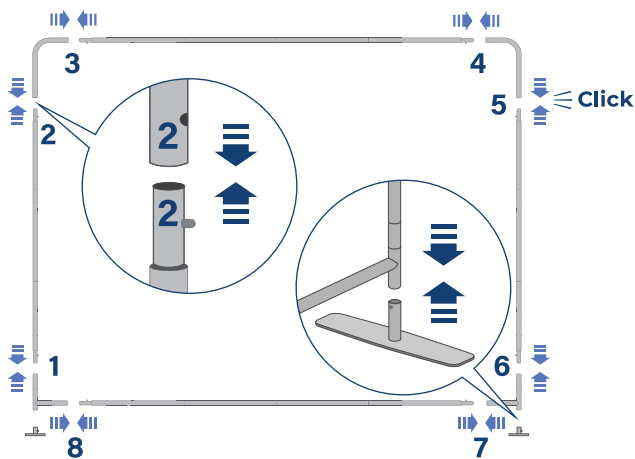
BOX CONTENTS



1

Assemble the Frame

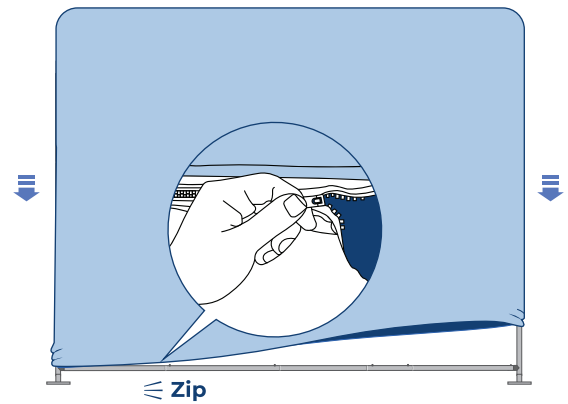
Connect the poles by matching up the numbers. Attach support feet to the bottom of the frame.



2

Install the Graphic

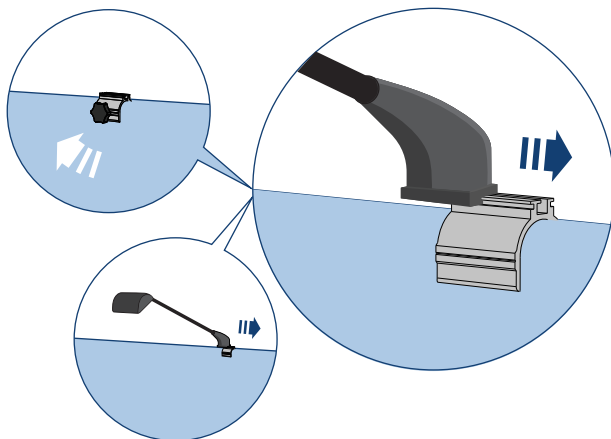
Carefully pull the graphic print over the frame, ensuring both sides are pulled down at the same time.



3

Attach LED Lights (Optional)

Attach light clips to the frame (knobs facing back) and tighten until secure. Slide LED lights into the top grooves.



4

Align the Display

Stand up the frame and shift or wiggle the corners until it's aligned and standing straight. Plug in your lights and your display is ready for action!

