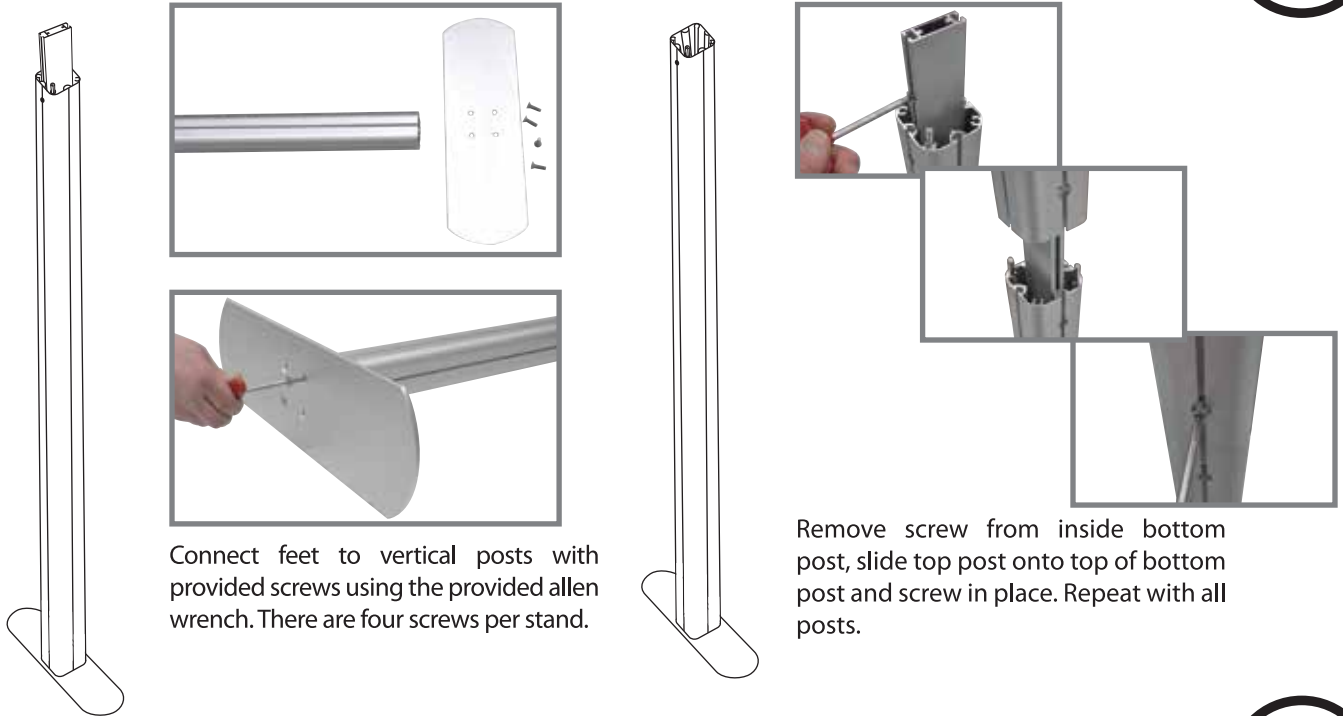


TL1002 Hybrid Display

Setup Instructions for TL1002F-S, TL1002F-T, TL1002A & TLKIT1

STEP
1

VERTICAL SUPPORTS Each 10' Kit includes: 2 posts, 2 feet, 8 screws

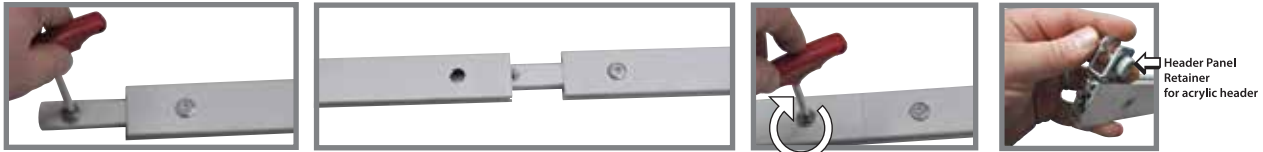


Connect feet to vertical posts with provided screws using the provided allen wrench. There are four screws per stand.

Remove screw from inside bottom post, slide top post onto top of bottom post and screw in place. Repeat with all posts.

STEP
2

MAIN HORIZONTAL SUPPORTS Each 10' Kit includes: 2 bars (2 pieces per bar), 2 header panel retainers



Remove the screw, slide into second half of the bar, replace screw and tighten with tool. Insert header panel retainers for header now.



Slide graphic into groove of the horizontal top bar. Then connect top horizontal bar into vertical posts.



Once the top bar is in place slide graphic into bottom horizontal bar and connect the same way. Now that the horizontal bars are in place you can push the edges of the graphic into the vertical post grooves. ****If attaching the optional Slat Walls, slide the screws into the top of the post at this point.**



STEP 3

END PANELS - Fabric includes: 2 graphics, 4 bars Acrylic includes: 4 acrylic panels, 8 panel retainers



Panel Retainer for acrylic sides



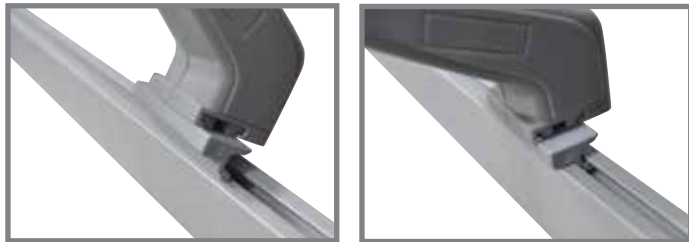
Fabric Ends: insert graphics the same way as main panel. Slide edges of graphic into top & bottom bars. Then insert bars into posts on sides of the display.

Acrylic Ends: insert panel retainers into vertical posts. Then insert acrylic sides into panel retainers and tighten.

STEP 4

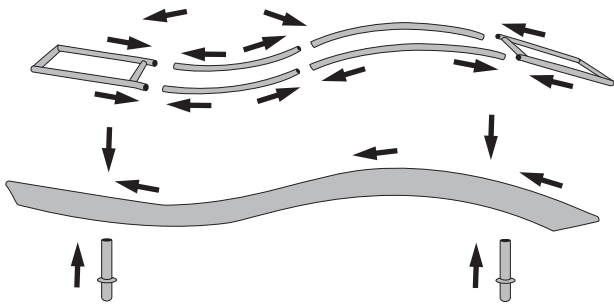
LIGHTS Each 10' Kit includes: 2 lights, 2 light cords & 2 light clips

Slide the light clip into the bottom of the lights. Then slide the light into the top horizontal bar as shown.

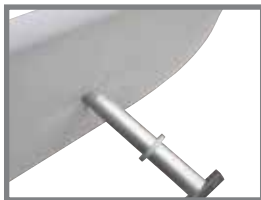


STEP 5

TOP WAVE -Each 10' Kit includes: 6 bars, 2 posts, 2 screws & 1 fabric cover



The pieces are labeled so they easily snap together.



Once the wave top hardware is together slide the fabric cover over like a pillow case and zip up. After cover is on the hardware, push screws through the top provided holes and screw into posts on bottom side.



Now insert the wave top assembly into the top of the vertical posts.

HEADER Each 10' Kit includes: 1 acrylic header

STEP
6



You can attach the header into the panel retainers that you inserted into the top horizontal bar now. These simply slide in and tighten.

TABLE -includes: 2 posts, 4 screws, 1 bottom plate, 1 acrylic top plate, 2 large bolts, 2 wing nuts & 1 clamp

STEP
7



Assemble table legs together with the top and bottom base plates and screws. Then attach acrylic table top with the large bolts and wing nuts to top of base plate on legs. Attach clamp to back of acrylic table top for insertion into vertical posts.

SHELVES -includes: 3 acrylic shelves, 3 brackets, 6 large bolts & 6 wing nuts

STEP
8



Attach brackets into vertical posts, tighten then place acrylic shelves on top and secure using large bolts and wing nuts.



Your display should look something like this. Note: picture only shows one shelf.

TL1002 Hybrid Display

Parts List for TL1002F-S, TL1002F-T, TL1002A & TLKIT1

TL1002F-S



2 Posts, 2 parts each



2 Feet, w/ 4 screws each



2 Center Bars, 2 parts each



4 End Bars



2 Header Panel Retainers



1 Wave top, 6 bars, 2 posts, 2 screws & 1 fabric cover



1 Tool



2 Lights w/ clips



1 Table, 2 posts, 4 screws, 1 bottom plate, 1 acrylic top plate, 2 large bolts, 2 wing nuts & 1 clamp



3 Shelves, 3 acrylic shelves, 3 brackets, 6 large bolts & 6 wing nuts



1 Header, this may be printed or etched, but plain is standard.



3 Graphics, 1 main panel, 2 straight end panels

TL1002F-T



2 Posts, 2 parts each



2 Feet, w/ 4 screws



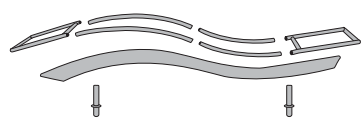
2 Center Bars, 2 parts each



4 End Bars, bottom shorter than top



2 Header Panel Retainers



1 Wave top, 6 bars, 2 posts, 2 screws & 1 fabric cover



1 Tool



2 Lights w/ clips



1 Table, 2 posts, 4 screws, 1 bottom plate, 1 acrylic top plate, 2 large bolts, 2 wing nuts & 1 clamp



3 Shelves, 3 acrylic shelves, 3 brackets, 6 large bolts & 6 wing nuts



1 Header, this may be printed or etched, but plain is standard.



3 Graphics, 1 main panel, 2 tapered end panels

TL1002 Hybrid Display

Parts List for TL1002F-S, TL1002F-T, TL1002A & TLKIT1

TL1002A



2 Posts, 2 parts each



2 Feet, w/4 screws each



2 Center Bars, 2 parts each



4 End Bars



2 Header Panel Retainers



1 Wave top, 6 bars, 2 posts, 2 screws & 1 fabric cover



1 Tool



2 Lights w/clips



1 Table, 2 posts, 4 screws, 1 bottom plate, 1 acrylic top plate, 2 large bolts, 2 wing nuts & 1 clamp



3 Shelves, 3 acrylic shelves, 3 brackets, 6 large bolts & 6 wing nuts



1 Header, this may be printed or etched, but plain is standard.



1 Graphic, 1 main panel



2 End Panels, acrylic panels 2 parts to each side



8 Panel Retainers, to hold end panels

TLKIT1



2 Posts, 2 parts each



2 Feet, w/4 screws



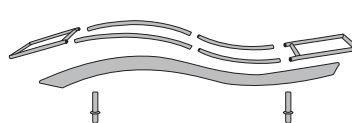
2 Center Bars, 2 parts each



4 End Bars, bottom shorter than top



2 Header Panel Retainers



1 Wave top, 6 bars, 2 posts, 2 screws & 1 fabric cover



1 Tool



2 Lights w/ clips



1 Table, 2 posts, 4 screws, 1 bottom plate, 1 acrylic top plate, 2 large bolts, 2 wing nuts & 1 clamp



3 Shelves, 3 acrylic shelves, 3 brackets, 6 large bolts & 6 wing nuts



1 Header, this may be printed or etched, but plain is standard.



3 Graphics, 1 main panel, 2 tapered end panels



TLKIT1 also includes: 1-Literature Station & 1-40" Wave Tube Counter